

# PRODUCT DATA SHEET

## ISO-CONNECT OUTSIDE CX



### PRODUCT DESCRIPTION

ISO-CONNECT OUTSIDE CX is a special foil sealant which is air tight and impermeable to driving rain for connecting joints on

- windows
- doors
- panels

in accordance to the Building Energy Act requirements. It consists of a water vapour diffusion permeable synthetic fleece with a self-adhesive strip on one edge for a quick and effective application on window frames. After installation ISO-CONNECT OUTSIDE CX can be plastered over.

### APPLICATION

ISO-CONNECT OUTSIDE CX is used to seal external connecting joints, for weather protection in areas where vapour diffusion permeability is required. It allows trapped moisture in building joints to escape, according to the RAL "installation guide", avoiding damage caused through condensation. ISO-CONNECT OUTSIDE CX is highly flexible, which aids exact application, particularly around corners. It also allows the optimum bonding of wet plaster, render etc. (without the need of a primer), and is extremely suitable as a base for thermal insulation materials applied to external facades.

### PRODUCT ADVANTAGES

- air tight, wind proof and water vapour permeable
- driving rain and water resistant
- special fleece surface which is good for plastering, painting or pasting over
- with a self-adhesive strip for quick and effective installation
- highly flexible, but with a high tensile strength for an easy and exact application
- complies with the requirements of the Building Energy Act and the recommendations of the RAL "installation guide"
- 10 Year Function Warranty\*

\* On the conditions of the manufacturer (available on request).

### SERVICE

- standard sizes available from stock
- private label and / or special labelling available
- competent experienced technical support available in the field and by phone



# ISO-CONNECT OUTSIDE CX



Technical data	Standard	Classification
Material description		vapour diffusion permeable synthetic fleece
Colour		white
Weight		200 – 250 g/m <sup>2</sup>
Impermeable to driving rain	DIN EN 1027	≥ 1,050 Pa
Air permeability coefficient	DIN EN 12114	airtight $a \leq 0.1 \text{ m}^3/[\text{h} \cdot \text{m} \cdot (\text{daPa})^{2/3}]$
UV stability		approx. 3 months
Temperature stability range	internal	approx. -40 °C to +100 °C
sd-value	DIN EN ISO 12572	approx. 0.05 m
Flexibility at -23 °C	internal	no breaks, no tears
Fire behaviour	DIN EN 13501	E
Dimension tolerance	DIN 7715 T5 P3	requirements fulfilled
Handling temperature		+5 °C to approx. +45 °C
Shelf life		1 year, dry and in original packing
Storage temperature		+1 °C to +20 °C

## PROCESSING

The bonding surfaces must be firm, dry, clean from dust, stripping agents, solvents, oil and fat. When sealing windows, panels and door frames remove backing from the self-adhesive strip, then place the foil onto the surface and press securely. ISO-CONNECT OUTSIDE CX can be applied in the factory.

For the wall applications ISO-TOP FLEX-ADHESIVE SP is used. Normal rough, e. g. uneven wall surfaces, can be compensated for through the application of a sufficient amount of adhesive. Use sufficient adhesive so that after applying the foil the adhesive caterpillar is at least 30 mm wide and 1 mm thick. On areas that are to be plastered over a continuous "Z" shaped caterpillar should be applied over the area. Overlapping of the foil ends should only be up to 50 mm wide using the same technique. Plastering can be done as soon as the adhesive bond is sufficiently cured to carry the plaster.

## FINISHES

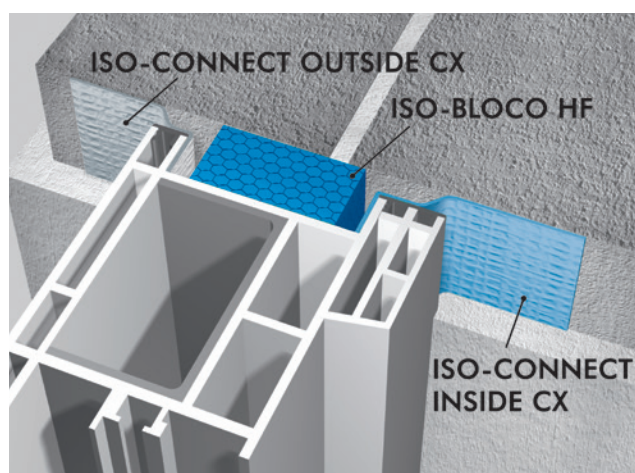
single side self-adhesive with 1 self-adhesive strip  
special finishes available on request

## DIMENSIONS

width: 70, 90, 145, 180, 235, 290 mm

## PACKAGING

rolls, roll length: 30 m



Installation example: ISO<sup>3</sup>-WINDOW SEALING SYSTEM