

# PRODUCT DATA SHEET

## ISO-CONNECT OUTSIDE FD



### PRODUCT DESCRIPTION

ISO-CONNECT OUTSIDE FD is an extremely flexible and stretchable special foil for external weather sealing and thus an impermeable to driving rain sealant on windows, doors and panel connecting joints.

It consists of a flexible soft synthetic fleece, which is equipped with a self-adhesive strip on one edge for an easy and effective application on window frames. The vapour diffusion permeable fleece foil allows humidity to escape externally and corresponds to the requirements of the Building Energy Act (EnEV was valid 31.10.20) as well as the RAL "installation guide".

### APPLICATION

ISO-CONNECT OUTSIDE FD is a system component of the ISO<sup>3</sup>-WINDOW SEALING SYSTEM and is used on external construction connecting joints as a weather tight seal.

The versatile special foil is very flexible in its application and is characterised through its low inherent rigidity, allowing a problem-free application around corners. Due to the extremely high elasticity of the material it is particularly suitable for the reliable sealing of movement joints. Even on extreme movements between elements the flexible window connecting foil allows for a high degree of movement and at the same time high ultimate tensile strength.

### PRODUCT ADVANTAGES

- high elasticity and flexible adaptation, compensates joint movement
- low inherent rigidity and at the same time high ultimate tensile strength for easy and effective application
- air tight, wind proof and vapour diffusion permeable
- driving rain and water resistant
- special fleece surface enables plastering, painting or pasting over
- with self-adhesive strip for easy installation
- complies with the requirements of the Building Energy Act (EnEV was valid 31.10.20) and the recommendations of the RAL "installation guide"
- 10 Year Function Warranty\*

\* On the conditions of the manufacturer (available on request).

### SERVICE

- standard sizes available from stock
- private label and / or special labelling available
- competent experienced technical support available in the field and by phone

### DIMENSIONS

width finish SK: 70, 90, 145, 180, 235, 290 mm  
width finish COMPLETE: 70, 100, 140, 200 mm  
width finish COMPLETE DUO: 70, 100, 140 mm

# ISO-CONNECT OUTSIDE FD



Technical data	Standard	Classification
Material description		vapour diffusion permeable synthetic fleece
Colour		white
Weight		approx. 140 g/m <sup>2</sup>
Impermeable to driving rain, single joint	DIN EN 1027	≥ 1,050 Pa
Air permeability coefficient	DIN EN 12114	airtight $\alpha \leq 0.1 \text{ m}^3/[\text{h}\cdot\text{m}\cdot(\text{daPa})^{2/3}]$
UV stability		approx. 3 months
Temperature stability range	internal	approx. -40 °C to +80 °C
sd-value	DIN EN ISO 12572	approx. 0.05 m
Flexibility at -23 °C	internal	no breaks, no tears
Fire behaviour	DIN EN 13501	E
Dimension tolerance	DIN 7715 T5 P3	requirements fulfilled
Handling temperature		+5 °C to approx. +45 °C
Shelf life		1 year, dry and in original packing
Storage temperature		+1 °C to +20 °C

## PROCESSING

The bonding surfaces must be firm, clean from dust, stripping agents, solvents, oil and grease. When sealing window, panel and door frame connections, remove backing from the self-adhesive strip, then place the foil into position and press firmly. ISO-CONNECT OUTSIDE FD can be applied in the factory or workshop.

For the wall applications ISO-TOP FLEX-ADHESIVE SP is used. Normal rough, e. g. uneven wall surfaces, can be compensated for through the application of a sufficient amount of adhesive. Use sufficient adhesive so that after applying the foil the adhesive caterpillar is at least 30 mm wide and 1 mm thick. On smooth wall surfaces the fully self-adhesive finishes COMPLETE and COMPLETE DUO do not require any additional adhesion with ISO-TOP FLEX ADHESIVE. Overlapping of the foil ends should be up to 50 mm wide using the same technique.

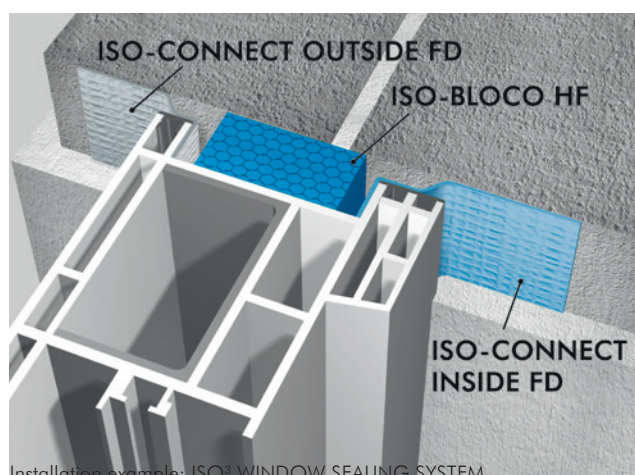
Plastering can be done as soon as the adhesive is sufficiently cured to carry the plaster.

## FINISHES

- finish SK: single side self-adhesive with 1 self-adhesive strip
- finish COMPLETE: full surface adhesive finish with a 2-way or 3-way split liner
- finish COMPLETE DUO: full surface adhesive finish with a 2-way or 3-way split liner and 1 self-adhesive strip (window mounting)
- special finishes available on request

## PACKAGING

rolls, roll length: 30 m



Installation example: ISO<sup>3</sup>-WINDOW SEALING SYSTEM