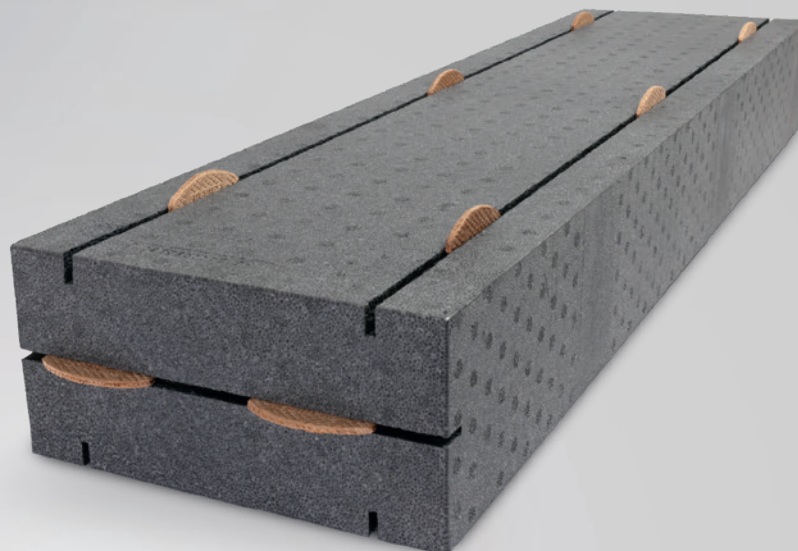


PRODUCT DATA SHEET

ISO-TOP BASE HS



PRODUCT DESCRIPTION

ISO-TOP BASE HS is a load-bearing and easy to install system component for creating thermally optimised supporting structures, especially for lift-and-slide elements. The supporting profile consists entirely of thermally insulating material, sustainably eliminates energy weak spots and increases energy savings and living comfort. ISO-TOP BASE HS is produced to fit the specific profile and width of the floor threshold used. The innovative profile-related 4-sided tongue and groove system ensures the non-slip fixing of the threshold on the substructure profile and completely cut-free continuous endless installation is possible. This saves valuable time on site, prevents installation delays and enables cost-efficient processing with calculations.

DIMENSIONS

- Length: 1200/2400/3600 mm
- Width: project-specific*
- Height: 40/50/60/70/80/90/100 mm

* To individual specification

PRODUCT ADVANTAGES

- fast and simple installation
- for all standard floor threshold systems
- secure screwed joint thanks to screw guide drilled at the factory
- simple height adjustment possible at a later date
- optimum integration in thermal insulation composite systems
- optimisation of the Ψ value thanks to highly heat-insulating properties
- improves living comfort and prevents mould formation
- easy to process
- waste reduction due to continuous installation
- compression-resistant, resistant to decay and non-rotting
- complies with the requirements of the Building Energy Act and the recommendations of the RAL "installation guide"
- 10 Year Function Warranty*

* On the conditions of the manufacturer (available on request).

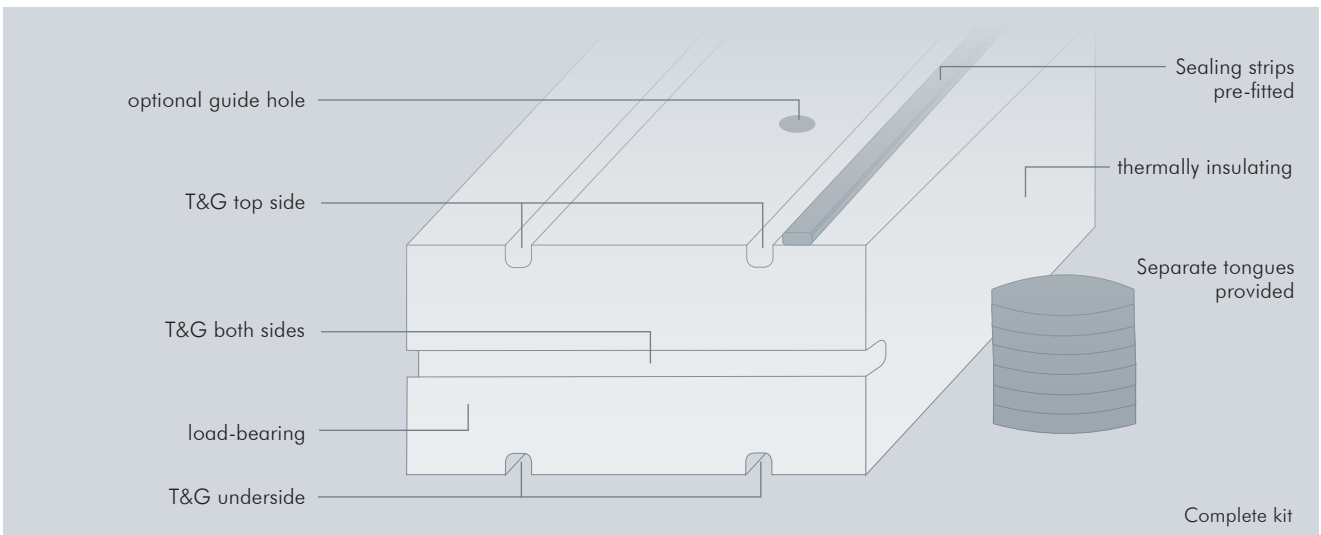
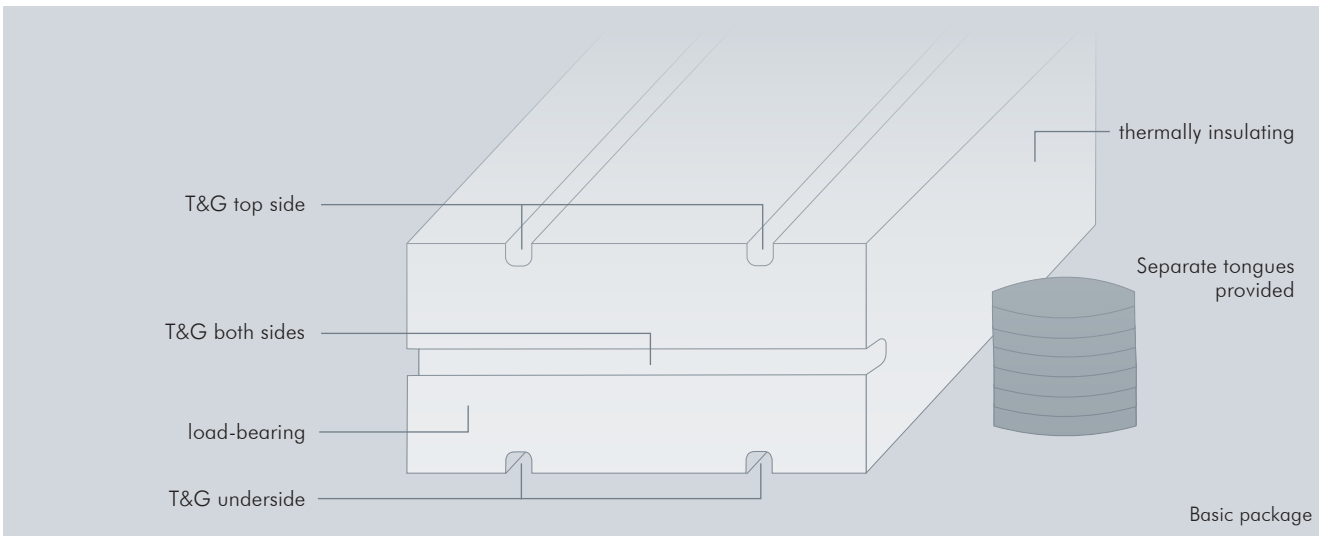


ISO-TOP BASE HS

VERSIONS

ISO-TOP BASE HS can be individually adapted to the specific situation on site. The specific height of the profile is selected and ready to install or can be subsequently adapted during installation by doubling or shortening. The installation depth is custom-fitted to the floor threshold used, guaranteeing uncomplicated combination. In the basic version, the supporting profile

is supplied with two grooves on the top side and underside, a groove on each end face and the matching separate tongues. Optional packages such as the sealing package or the equipment with guide holes facilitate the sealing with respect to the building structure and connection to the lift-and-slide element.



Variants	
Basic package	ISO-TOP BASE HS
Installation package	Guide holes drilled at the factory make it easier to fit to the lift-and-slide element (3 holes at 20 / 60 / 100 cm spacing)
Sealing package	Sealing tape applied at the factory for the air tight connection to the lift-and-slide element

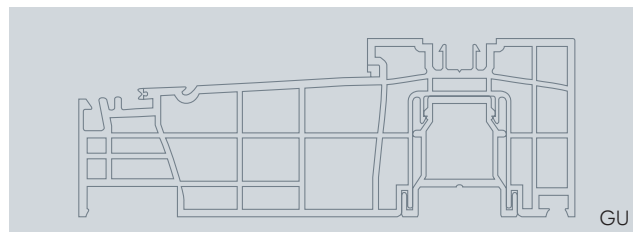
PRODUCT DATA SHEET

ISO-TOP BASE HS

SUITABLE FOR ALL STANDARD FLOOR THRESHOLDS

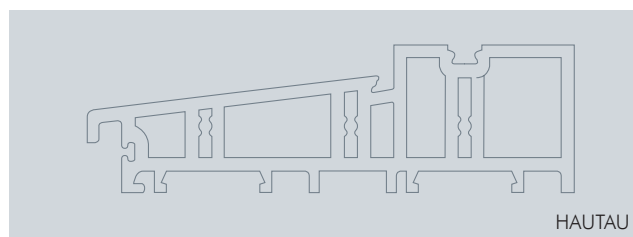
- **GU thermostep**

GU thermostep 164 BT142
GU thermostep 164 BT170
GU thermostep 164 BT190
GU thermostep 204 BT189
GU thermostep 204 BT194
GU thermostep 204 BT197
GU thermostep 204 BT204
GU thermostep 204 BT207
GU thermostep 204 BT219
GU thermostep 204 BT231



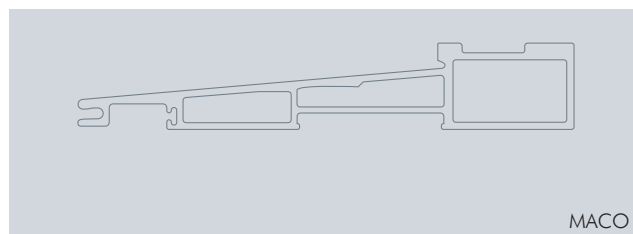
- **Hautau Atrium HS 330 ThermoTop**

Hautau Atrium HS 330 ThermoTop 2.1 175 WP4
Hautau Atrium HS 330 ThermoTop 2.1 175 WP5
Hautau Atrium HS 330 ThermoTop 2.2 175 WP11
Hautau Atrium HS 330 ThermoTop 2.2 175 WP10
Hautau Atrium HS 330 ThermoTop 2.2 200 WP12



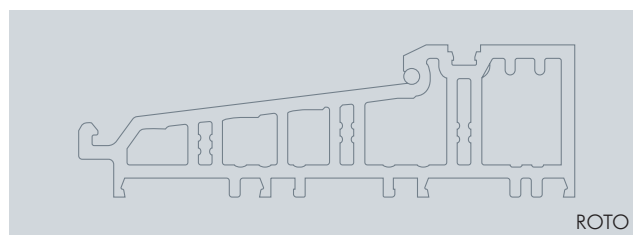
- **MACO GFK basic profile**

MACO GFK basic profile 180
MACO GFK basic profile 180 CH
MACO GFK basic profile 180 CH angle
MACO GFK basic profile 240



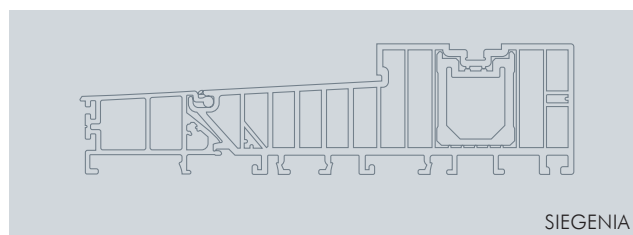
- **ROTO Patio Life**

ROTO Patio Life 171



- **SIEGENIA ECO PASS**

SIEGENIA ECO PASS B171 A-groove
SIEGENIA ECO PASS B175
SIEGENIA ECO PASS B179
SIEGENIA ECO PASS B182 A-groove
SIEGENIA ECO PASS B190
SIEGENIA ECO PASS B190 old & R190
SIEGENIA ECO PASS B194
SIEGENIA ECO PASS B203 A-groove
SIEGENIA ECO PASS B207



• Other manufacturers available upon request.

ISO-TOP BASE HS

Technical data	Standard	Classification
Material description		THERMAPOR (EPS-F / flame-retardant)
Colour		silver-grey
Building material class	DIN EN 13501-1	E
Fire behaviour	DIN 4102-1	B1
Resistance to driving rain	DIN EN 1027	≥ 1,200 Pa
Bulk density		150 kg/m ³ ± 10%
Flame retardant		HBCD-free flame retardant
UV stability		6 months direct weathering during the construction phase
Compatibility with adjacent materials	Internal	requirements fulfilled
Compatibility with salt water/hydrochloric acid (10%)		resistant
Compatibility with sodium hydroxide solution (10%)		resistant
Air permeability coefficient	DIN EN 12114	α = 0.00 m ³ / [h · m · (daPa) ^{0.5}] (no measurable air penetration)
Thermal conductivity	DIN EN 12667	λ = 0.040 W / (m · K)
Sound reduction / rated joint sound reduction value	EN ISO 10140-1 / -2	R _{s,w} (C; C _{tr}) = 46 (0; -1) dB
Intrusion-resistant	DIN EN 1627	resistance class RC2 and RC3
Dimensional stability under thermal stress		-40 °C to +85 °C
Temperature stability range	ISO 75-1	long-term +85 °C
Ageing resistance		resistant to rotting, non-rotting
Compressive strength at 2% / 10%	DIN EN 826	1.194 N/mm ² / 1.793 N/mm ²
Bending strength	DIN EN 12089	≥ 650 kPa
Shear strength	DIN EN ISO 14130	X = 0.217 N/mm ²
Creep behaviour at 20% and 60%		Em = 0.68 0/00 to 5.2 0/00
Water absorption capacity (28 days storage)	DIN 12087	≤ 1.5 Vol. %
Water vapour diffusion resistance μ	DIN EN ISO 12572	< 70
Waste codes		170604 / 170904
Dimensionally stable up to		1,000 kg per linear metre and profile width of 100 mm
Dimensional tolerance	DIN 7715 T5 P3	requirements fulfilled
Storage time		24 months

APPLICATION

Supporting profile specially for adjusting the height of lift-and-slide door elements made from wood, aluminium-clad wood, aluminium and plastic on the concrete slab. The sealing must be carried out technically correctly in accordance with the applicable standard. Sufficient protection against weathering is to be ensured between ISO-TOP BASE HS and the floor slab. Protection against driving rain and / or standing water is to be provided on the outside. On the inside, all joints must be air tight and present a barrier to vapour diffusion.

ACCESSORIES

- ISO-TOP FLEXIBLE ADHESIVE WF for air tight bonds
- ISO-TOP MEMBRA SX for air tight sealing to the component
- ISO-TOP WINDOW SCREW FB-FK