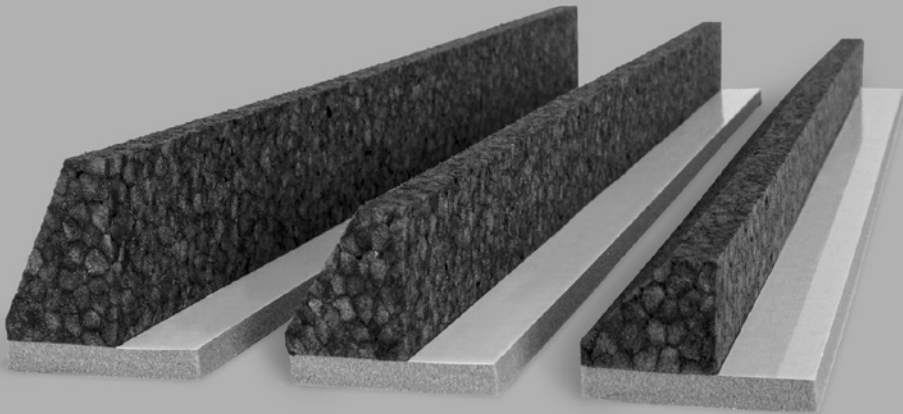


INSTALLATION INSTRUCTIONS

ISO-BLOCO FILLER

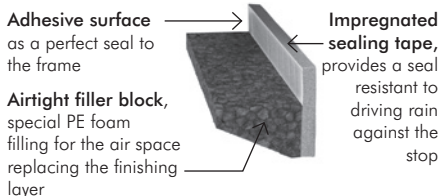


Multifunctional insulation and sealing system for sealing windows
in air spaces in cavity walls



PREPARATION

Read the instructions through completely before starting work. If anything is unclear or you have any questions, please clarify these points first with the supplier. When using the material for the first time, we recommend instruction through a trained employee or representative from the supplier.



FITTING

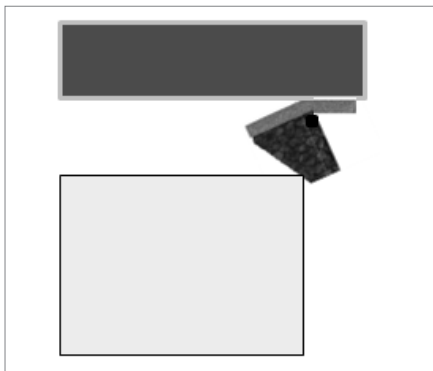
After removing the old window, check the solidity of the base. Clean the masonry of any coarse soiling and mortar residue, level out the masonry joints and any large breaks in the masonry with a finishing layer if necessary (fast-drying cement mortar). The base must be dry, firm, grease- and ice-free and have a sufficient load-bearing capacity.

The ISO-BLOCO FILLER profile is fixed first in the horizontal lower and upper air space opening.

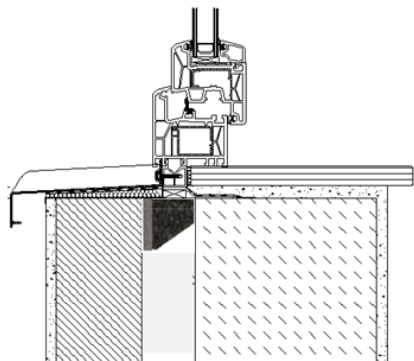
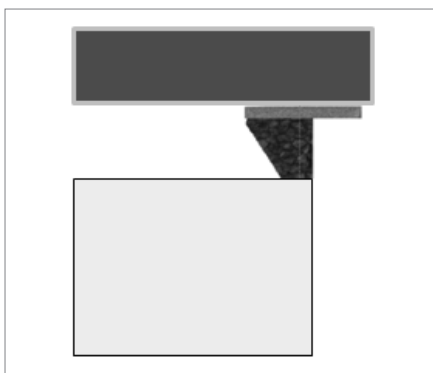
If necessary, cut back the sealing tape strip on the lower profile so that it does not project beyond the level of the masonry window sill. ISO BLOCO FILLER is

to be provided as insulation, but not for load transfer. Either a knife or scissors can be used for cutting the sealing tape to size.

Insert ISO-BLOCK FILLER into the air space at an angle. Position the sealing tape strip in such a way that it is flush with the edge of the external masonry wall.



Then push the ISO-BLOCO FILLER profile into the joint until it is flush with the required level.

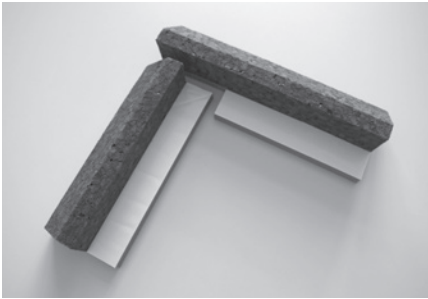


In its final position the sealing strip must not project beyond the edge of the masonry and should be positioned at least 3mm behind the sealing surface. The sealing surface should be a smooth, level, continuous surface. The processing guidelines for joint sealing tapes apply (see "Fitting the window system" below).

Projecting material can be shortened using a knife or scissors.

The ISO-BLOCO FILLER profile can be compressed by up to 20 mm.

Before the upper sealing profile is fitted, the impregnated sealing strip on the top horizontal profile must be cut out at the corners on both the left and right sides to produce a vertical butt joint, without overlaps, with the profiles to be fitted vertically into the jamb areas.



For an airtight seal at the corners, the rigid bar of the vertical profile should be cut back by 2 mm to achieve a defined pressure joint between the 2 impregnated tape sealing strips.

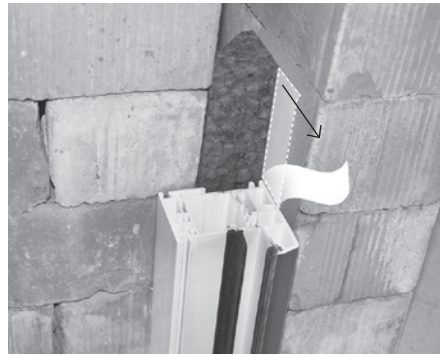


ISO-BLOCO FILLER pieces can be butt jointed to extend their length. For an airtight joint cut the rigid bar back by 2 mm to achieve a defined pressure joint between the impregnated tape sealing strips.

FITTING THE WINDOW SYSTEM

After the ISO-BLOCO FILLER has been fitted successfully, the window system is installed.

To do this, align the window in the masonry opening. Fold back the cover strip on the impregnated foam by 2-3 cm at 90° and form a pulling loop to the outside (white flag in the illustration). Then place the window frame against the adhesive surface and pull the cover strip out between the frame and the sealing tape bar.



Fix the frame against the stop (check reveal) in such a way that an all-round sealing joint ≤ 6 mm is created.

Finally, fix the window in place mechanically and finish sealing in accordance with the generally accepted technical guidelines.

The following insulation and sealing systems are possible, depending on the inner reveal formation:

- ISO-BLOCO ONE
- ISO-BLOCO HF
- ISO-CONNECT foils
- Insulation using PU spray foam
- Spray-type insulating materials

The specifications published in the "installation guide" (current edition) issued

by the RAL-Gütegemeinschaft Fenster und Haustüren e.V. (RAL quality assurance association for windows and doors) must always be heeded.