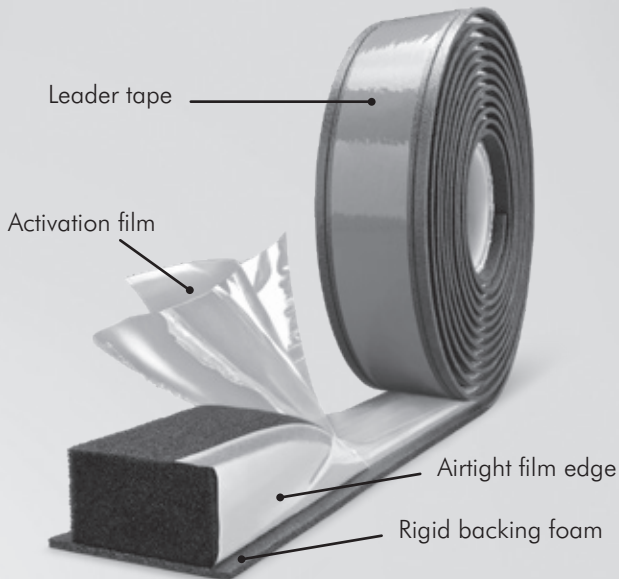


INSTALLATION INSTRUCTIONS

ISO-BLOCO ONE CONTROL



The multifunctional 3-level window seal for prefitting



TOOLS

- ISO-TOOL CLIP and CUT
- Scissors or knife
- Tape measure or metre rule
- Staple gun, staples

Scan here to view
instruction video for
PVC windows:



Scan here to view
instruction video for
wooden windows:



PLANNING

1. Determine the window profile depth and maximum gap between frame and wall.
2. Select the tape size to suit the window profile depth and the recommended joint application range (see box label).

NOTE

When you select the tape size and types (CB/ 1-BT/ 2-BT), always make sure it is compatible with the system used*

* Overview available upon request.

3. Special preparations must be made in terms of workstation equipment** for the fast and high quality pre-fitting of ISO-BLOCO ONE CONTROL.

** Description available on request

PREFITTING

ISO-BLOCO ONE CONTROL (CB) with clip attachment for plastic and aluminium windows

1. Cut the leader tape at the start of the strip using scissors or a blade, and pull off.
2. Cut the start of the tape straight, do not use the cut-off piece, approx. 2 cm in length. Use the ISO-TOOL CLIP assembly to push the multi-function joint sealing tape into the clip-fit grooves on the window frame. To fit on 3 sides, start at the bottom left or right corner of the window frame. To fit on 4 sides, start at the top left or right corner of the window frame.

NOTE

The airtight film edge of the multi-function joint sealing tape must point in towards the room.

3. Place the ISO-TOOL CLIP assembly tool on the frame, gently press the sides together so that the guides engage in the outer clip-fit grooves ①.

Guide the start of the ISO-BLOCO ONE CONTROL through the tool and into the outer grooves of the profile (the tool turns the two wings over so they clip into the grooves). Hold the end in place against the frame with one hand and push the ISO-TOOL CLIP, using slight pressure against the frame, along the profile to locate the remaining tape.



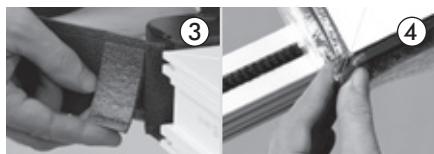
4. Creating the corners

At the corners create loops or insets with the multi-function tape, by removing the rigid backing foam.

Move the ISO-TOOL CLIP passed the corner then place the ISO-TOOL CUT exactly on the corner of the window profile and cut through the backing foam ②. Then make a second cut at the required distance (see rule of thumb for loop / inset).



Peel off the backing foam from bottom to top of the profile ③. Bend and stick together the exposed adhesive surface to form an equal loop / inset ④.



(1-BT/2-BT) is fixed to the window frame. The outer two butyl adhesive strips of ISO-BLOCO ONE CONTROL (2-BT) can, for example, be attached directly to the clip legs of PVC window frames. For additional mechanical fixing, ISO-BLOCO ONE CONTROL (1-BT / 2-BT) is fixed through both sides of the backing foam with staples (9). This is possible for both PVC and timber frames.



The corners and end joint are created in the same way as when fitting ISO-BLOCO ONE CONTROL (CB) on plastic window frames.

FINAL ASSEMBLY

1. Inserting window screws

Drill pilot holes for the window screws. An HSS drill bit is ideal for this task (10). Drill the hole directly through the frame and sealing tape while holding it in position.



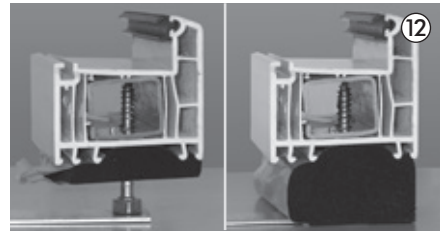
2. Clean the window reveal to remove coarse particles and mortar residues. Paint the masonry joints flat if necessary.
3. When you set the window in the reveal, make sure that the activation film points into the room and does not remain between the tape and window reveal.

4. Once you have fixed the window using suitable assembly screws or brackets, remove the clear activation film completely so that the multifunction joint sealing tape can fully close the construction joint (11).



ACCESSORIES

We recommend the use of window adjusting anchors for fixing, load transmission and adjustment of window elements.



NOTE

As a rule, the "Guiding principles for planning and implementation of the assembly of windows and house doors" published by the RAL-Gütegemeinschaft Fenster und Haustüren e.V. should be followed when fixing and distributing the loads of window and doors (using wedges, for example).

NOTE

Corner connections and strip joints should be sealed using ISO-TOP FLEX ADHESIVE XP after assembly and expansion of the strip.

The details and information given in this literature are based on best current knowledge. They are intended to serve as general information only and it is advised that the user conducts their own tests for their specific set of conditions to determine the suitability of the product for its proposed use. No warranty or liability is given or implied regarding any part of these instructions or details, or the completeness of the information. We reserve the right to modify, or change, the specifications and information without advance notification. All goods are supplied subject to our standard conditions of sales, copies of which are available upon request.

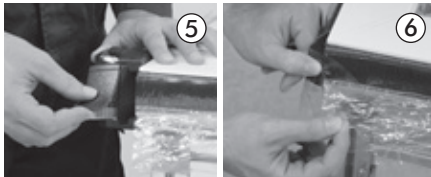
**Rule of thumb: Loop / inset
(backing material cutting distance)**

Example: Top joint	= 15 mm
Side joint	= 20 mm
Cutting distance	= 35 mm

Once you have created the corner, fit the ISO-TOOL CLIP to the second side of the profile and continue to apply the tape as step 3.

5. End butt joint/creating a corner

If ISO-BLOCO ONE CONTROL is fitted on 4 sides, the last corner is again created in the form of a loop/inset. To do this, cut off the backing material as per the rule of thumb, create a loop/inset ⑤ and then join the loop to the start of the strip using transparent adhesive tape ⑥.



Bottom join

Variant A: for fitting the tape to 4 sides

The sealing tape can be fitted to the bottom of the window profile or Cill/packing profile depending on installation requirements. If suitable grooves are not present then it is adhered using a butyl strip ⑦. Load distribution and/or adjustment anchors are essential ⑫.



Bottom join

Variant B: for fitting the tape to 3 sides

If the tape is used only on 3 sides, the bottom of the window can be sealed with an ISO-CONNECT window film. After installation the film is fixed to the inside

and optionally the outside of the window cill connecting profile to create a shallow trough. The appropriate system adhesive ISO-TOP FLEX ADHESIVE XP (follow the product data sheets) is then used to fix it to the masonry and the white airtight edge of the ISO-BLOCO ONE CONTROL, after it has expanded into place.

NOTE

Staples with clip fitting

Sometimes the clip legs on plastic window profiles have a weak design and hardly provide any mechanical hold. To reinforce the fixing of ISO-BLOCO ONE CONTROL to the window frame during transport and window fitting, we recommend additional fixing using 30°/45°/90° staples through the long wing of the clipped backing tape and the plastic clip legs ⑧.



ISO-BLOCO ONE CONTROL (1-BT/2-BT) with wooden, plastic and aluminium windows

Butyl adhesive strips are available as a further assembly possibility. These can be positioned in the centre of the backing tape (1 strip = 1-BT) or attached to both outer edges (2 strips = 2-BT). This is an advantage when the clip-fit grooves are not suitable for holding tape type CB (clip attachment) or where there is no peripheral clip-fit groove available, as is the case with wooden windows.

The process starts at one of the top corners of the frame. The protective film is first removed from the butyl adhesive strip, then the ISO-BLOCO ONE CONTROL